



Training Program on “ PROJECT MANAGEMENT ”

January 6-10, 2016

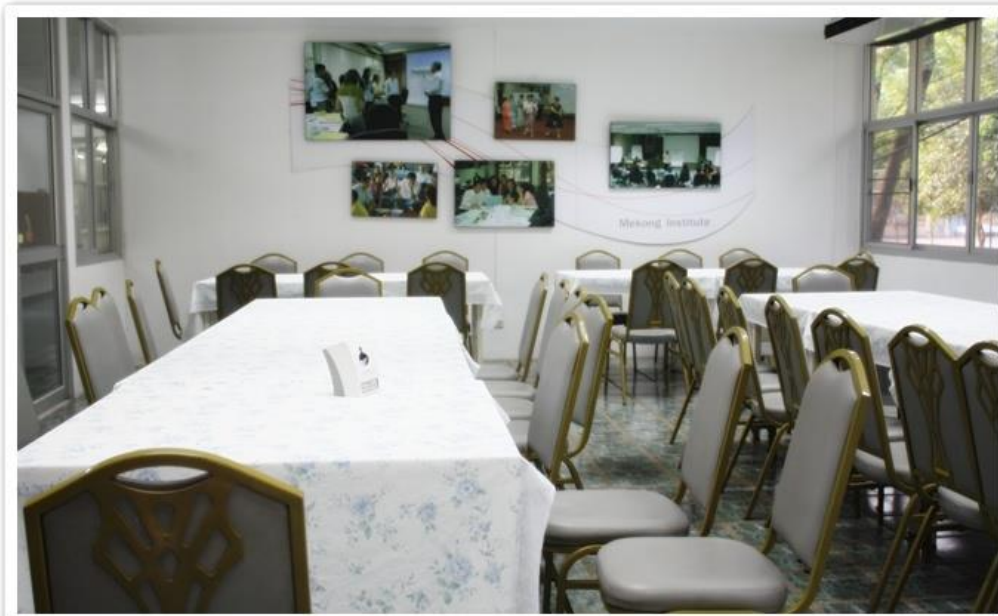
Organized by
The Mekong Institute (MI)
in collaboration with Neighbouring Countries Economic Development Cooperation Agency
(NEDA) and International Institute for Trade and Development (ITD)

Jointly sponsored by:

Thailand International Cooperation Agency (TICA)
and
The Swiss Agency for Development and Cooperation (SDC)

MI's Facilities

- Breakfast and lunch at MI canteen
- Coffee breaks
(10.00-10.15 am and 3.00-3.15 pm)



MI's Facilities

- Common rooms (2nd and 3rd floor)



- Refrigerator
- Coffee and Tea
- Water Boiler
- Dishes and glasses
- Television
- Newspaper

MI's Facilities

- MI Learning Resource Center (7 am – 10 pm)



MI's Facilities

- Laundry



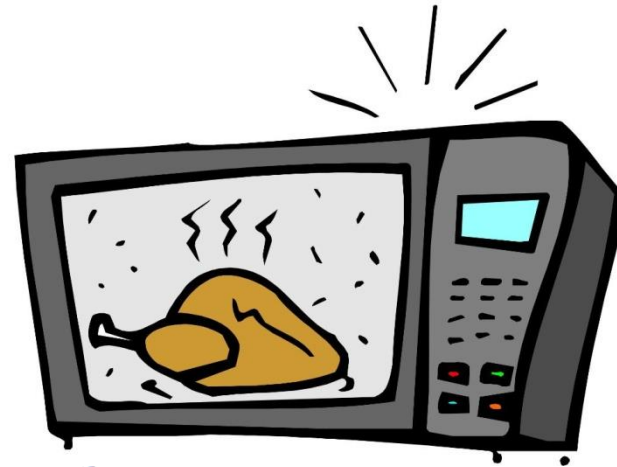
- . Order form is available in room.

- . Washing machines on 2nd floor and 1st floor lady toilet

- . Irons, and ironing board on 2nd and 3rd floor

MI's Facilities

- Microwave



- Non-smoking



MI Internet and Printing Service

- Internet card is attached in key jacket



- Wireless Internet

Username: MI Net Office APX

Password: ab88776655

- Course CD
- Printing service



eLearning

Mekong Institute



To access E- Learning

MEKONG INSTITUTE
ABOUT US THEMES PARTNERSHIP RESOURCES DATABASE JOIN US CONTACT STAFF PORTAL

Dissemination Workshop on Improving the Postharvest Handling of Lettuce in Lao PDR

Dissemination Workshop on Improving the Postharvest Handling of Lettuce in Lao PDR

Mekong Institute 20th Anniversary Logo Contest Competition

Validation Workshop on Stakeholders' Perception Study on the Adoption of Good Agricultural Practices (GAP) in Cambodia

Thematic Areas

- Trade & Investment Facilitation
- Agricultural Development & Commercialization
- Innovation & Technological Connectivity

Project

- RLED-EWEC Project

Upcoming Program **Conducted Program**

Gallery

Publications

Video

Announcement

Mekong Institute 20th Anniversary Photo ...
Mekong Institute is pleased to announce its 20th anniversary photo competition with the theme: "Capturing Growth..."

Training Program on ...
The Mekong Institute Governmental Organization, invites applications for a Local training coordinator c...

Database Portal

- PMI
- NSEC
- Asia Silk Business
- LMFSD
- E-Learning**
- Alumni Database

Available Courses

Home

Navigation

Home

▸ Site pages

▸ Courses

Course categories

▼ Collapse all

▸ 2017

▸ 2016 (1)

▸ 2015 (21)

▸ 2014 (20)

▸ 2013 (17)

Available courses

Project Management, January 6-10, 2016

Facilitator/Teacher: Than Tha Aung

Facilitator/Teacher: Admin E-learning

Facilitator/Teacher: Phornphan Srihatthanaprom

Facilitator/Teacher: jian wang

In order to train participants in all aspects of project management and to provide insights into the project planning and development process of development projects which have trans-boundary or trans-national implications, Mekong Institute in cooperation with NEDA is organizing a practical training program on "Project Management in the Context of GMS Cooperation and Integration". The target audiences are government officials, managers of multinational enterprises and development professional from the CLMV countries, Sri Lanka, Timor Leste, and Bhutan - who are involved in the identification, design, and planning of development projects. The course will provide them with better understanding of today's state-of-the-art practices in project management in the regional and sub-regional development sphere.

Planning and Implementing Contract Farming Operations, November 23-26, 2015

Facilitator/Teacher: Admin E-learning

Facilitator/Teacher: Paoloregel Samonte

Facilitator/Teacher: Ra Thorng

Mekong Institute (MI), in collaboration with the Food and Agriculture Organization of the United Nations (FAO) is going to organize the Regional Training Workshop on Planning and Implementing Contract Farming Operations from November 23-26, 2015 at MI Residential Training Center in Khon Kaen. The program aims to build the capacity of participants in dealing with issues related to facilitating market linkages through contract farming operations.

To Login as a guest

Returning to this web site?

Login here using your username and password
(Cookies must be enabled in your browser) ?

~~Username~~

~~Password~~

Login

☐ Remember username

Forgotten your username or password?

Some courses may allow guest access

Login as a guest



To Login as a guest



You are currently using guest access (Log in)

Home ► Courses ► 2016 ► PM2016 ► Enrolment options

Navigation

Home

► Site pages

▼ Current course

▼ PM2016

► Courses

Enrolment options

Project Management

Facilitator/Teacher: [Than Tha Aung](#)

Facilitator/Teacher: [Admin E-learning](#)

Facilitator/Teacher: [Phornphan Srihatthanaprom](#)

Facilitator/Teacher: [jian wang](#)

In order to train participants in all aspects of project management and to provide insights into the project planning and development process of development projects which have trans-boundary or trans-national implications, Mekong Institute in cooperation with NEDA is organizing a practical training program on "Project Management in the Context of GMS Cooperation and Integration". The target audiences are government officials, managers of multinational enterprises and development professional from the CLMV countries, Sri Lanka, Timor Leste, and Bhutan - who are involved in the identification, design, and planning of development projects. The course will provide them with better understanding of today's state-of-the-art practices in project management in the regional and sub-regional development sphere.

▼ Guest access

Password ☒ Unmask

Navigation

Home

► Site pages

▼ Current course

▼ PM2016

■ Participants

► General

► Topic 1

► Topic 2

► Topic 3

► Topic 4

► Photos

► Topic 6

► Topic 7

► GMS Song MV

► Topic 9

► Topic 10

► Topic 11

► Topic 12

► Courses

Topic 1

Dear Participants,

This MI E-learning has been set up for participants of MI Learning Program on "Project Management". It contains all learning materials and references such as lecture notes, presentations, case studies, field reports and outputs of group works. If there is any question on the use of this e-learning system, please contact your learning Program Facilitators: Ms. Tha Tha Aung at thantha@mekonginstitute.org

Best regards,
Organization Team

Topic 2

- » [Curriculum download>>](#)
- » [Schedule download >>](#)
- » [Directory download>>](#)

Reception

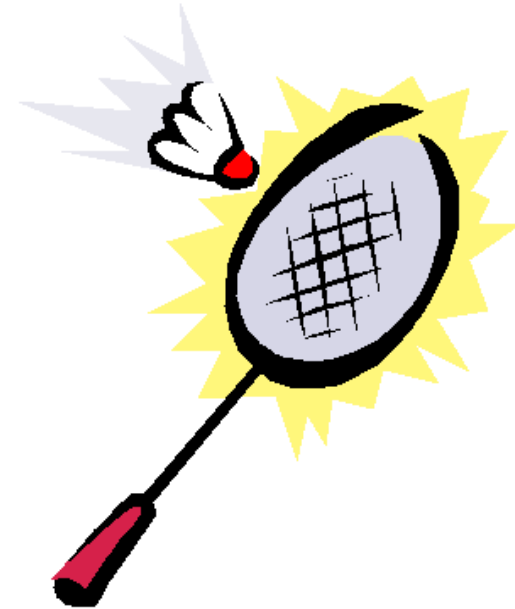
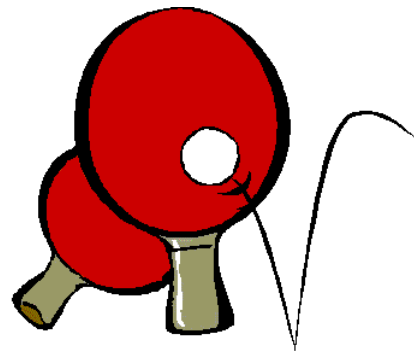


- 7.00 am-10.00 pm

- Postal and fax services

- Bank services – inform 1 day in advance

Sports and Exercises



- Within MI: Table tennis and Badminton
- Nearby MI: Aerobic, Swimming pools, Jogging



Pls contact Reception

Dinner

Night Market



Student Complex



Social Activities

- **Shopping Trip**(January 7)
- **Farewell party** (January 10)

Getting around KKU and to downtown area

- Khon Kaen University's shuttle bus is from 06.00-21.00.

Free of Charge



- See the service route at http://www.kku.ac.th/transportation/map_small01.php

Getting around KKU and to downtown area (cont.)

- Fare is 9 Baht, Time: 5.00 am – 7.30 pm



Blue Bus #8



Red Bus #16

Getting around KKU and to downtown area (cont.)

- “Tuk Tuk”



“Taxi”

30 Baht first 3 km, then 4 Baht for each additional
Call Center: **043-46577760**

Getting around KKU and to downtown area (cont.)

- Mini van to Central Plaza 15 Baht (one way)
15 Baht (returned) - 10.00 am – 10.00 pm



Facilitators



Phornphan
(080 972 7894)

Than Tha Aung
(09 637 83237)





THANK YOU!